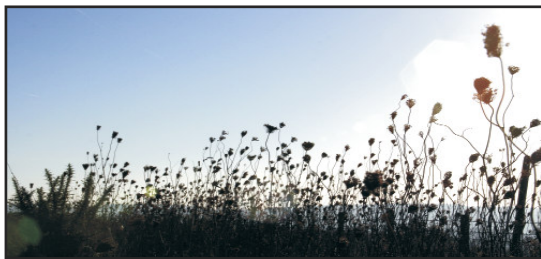




NOTTINGHAMSHIRE



# Case Study

## Nottinghamshire

### Wheels to Work

Owing to limited public transport in rural areas, people often encounter difficulties travelling to work, training or education. The Wheels to Work (W2W) project helps people to overcome these barriers by loaning a moped to individuals for up to a year, enabling them to access work and learning.

Annabel, 19, from Calverton, had been studying Catering at College, but now needed to find a suitable job which would provide an income and give her some real experience in her industry. She was fortunate enough to secure a good job at a small hotel with an excellent reputation for food, but the hotel was in a small village near Southwell, quite a way from home, and the shifts finish close to midnight. There was no bus from home to work, and especially at the time of night she needed it! Annabel was considering having to turn down the job offer, but then she found out about Wheels to Work from a poster in the library, and made enquiries.

Annabel applied to the scheme and was provided with a moped and the necessary safety equipment, and a one day training course to teach her the basics of riding a moped. She was then able to accept the job offer, knowing that she could make the journey under her own steam! She contributes £10 a week to the costs of having the moped, and servicing, insurance and tax are also taken care of by the project.

She now thoroughly enjoys her job, finding the practical experience really beneficial to her college course, and her employers are impressed with what she has achieved and how she has applied herself to the job. She now has an income to support herself as well. Her bike has been reliable in getting her to work and back on time and safely. Without Wheels to Work, Annabel would not have been able to achieve all this, a fantastic start to her career in catering.

Nottinghamshire Wheels to Work has assisted 223 people in this way over the six years of operation, with current funding coming from Notts County Council, the Coalfields Regeneration Trust, Greater Nottingham Partnership, and the Alliance SSP.

Contact Liam Russell, Wheels to Work Project Officer, for more information.

**Tel: 01623 727620**

**e-mail: [wheels2work@rcan.org.uk](mailto:wheels2work@rcan.org.uk)**

**[www.nottswheels2work.org.uk](http://www.nottswheels2work.org.uk)**