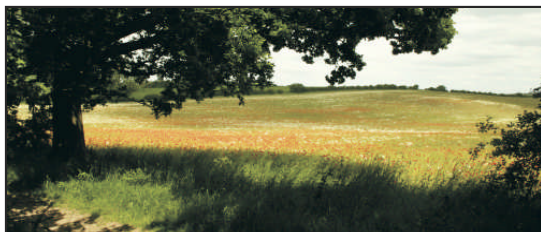




NOTTINGHAMSHIRE



Case Study

21st Century Villages

Rural Community Action Nottinghamshire is committed to working with communities to address current and future environmental challenges. Here are just some of the activities and actions that we support:

Al Gore 'An Inconvenient Truth' film events showing the film to local communities, followed by energy advice and local debate on how this can impact on individuals. Project sponsored by Everybody's Talking About Climate Change.

Enterprise – 'Shop in a Box'

promoting local set up of community shops in communities which did not have these facilities, encouraging locally sourced produce, reduced food miles, sustainability, local jobs, and therefore reduced travel to work. We have staff who can signpost to agencies and also support organisations to look at alternative and renewable energy sources. We help with business plans, to show a community how to set up a community shop and how to manage it. We also help communities with funding searches for these projects.

Parish Plans

Parish Plans cover a whole range of subjects for consultation and result in some of the following being flagged up by communities, and supported by our staff to work towards solutions: Reduce travel, environmental concerns such as noise pollution and aircraft noise. Communities are encouraged to look at alternative energy for community buildings and are advised by our Village Halls Advisor on sustainable resources. Our Housing Enabler work includes sections on affordable housing and is the first step towards looking at eco buildings concepts.

Community Space

Green spaces are key and we work with individuals on environmental improvements, allotments reuse by communities and locally grown food schemes. We encourage local tourism and the 'visitor next door' concept. Walks and cycling routes for tourism and use of the waterways and other low carbon tourism options are also promoted.

Transport

Car share and mini buses initiatives are supported to reduce congestion and share journeys. Transport work is moving towards Accessibility to get the services to people and reduce the need to travel. An innovative example of this is the BISCUIT project – a remote video conferencing system enabling isolated people to communicate directly with the district council.

Research

We have been commissioned by emda to carry out a Greening Communities tender exploring potential models for delivery on environmental projects across the Region.

Contact Penny Altham, Head of Project Development, to discuss these and other environmentally focused work that we are involved in.

Tel: 01623 727600 Email: paltham@rcan.org.uk